

Sabroe TSMC 116 L / TSMC 116 S package

Specifications

Marque	Sabroe
Le type	TSMC 116 L / TSMC 116 S package
Réfrigérant	NH 3 (ammonia)
kW at -40°C/+40°C	396* at -40 / -10 (60hz booster)
Électromoteur Specs	Schorch 90kw 1470RPM // AEG 110KW 1475RPM
Démarrage à vide	✓
Contrôle de capacité	✓
Sur le châssis en acier	✓
Interrupteurs de sécurité de pression	✓
Manomètres	✓
Commutateurs de pression de condensation	✓
Aspiration d'accumulateur	✓
Séparateur d'huile	✓
Panneau de configuration	✓
Remarques	Control panels including Siemens Simatic OP27



	approx.
Weight / Rack	5040kg / excl. Motor
Tailles	5750x2040x2340 mm (LxWxH)
Stock	1

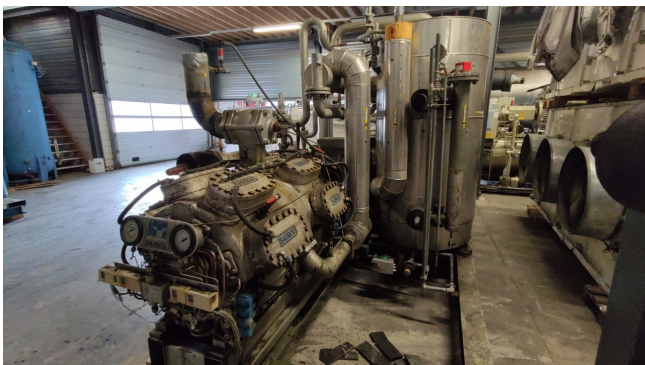
Description

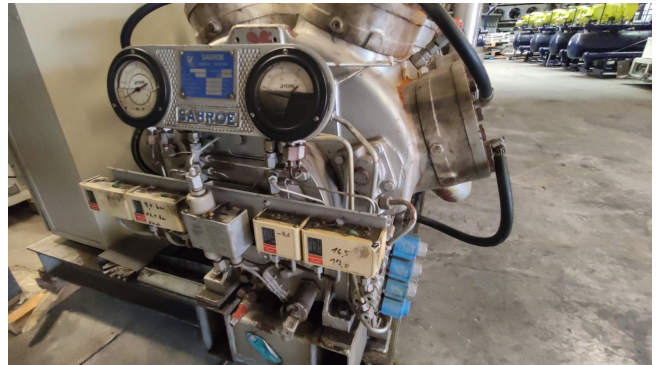
Used Sabroe TSMC 116 L / TSMC 116 S package

Used, well maintained Sabroe TSMC 116 L / TSMC 116 S freeze NH3 (ammonia) package, completely engineered with Control panels , including Siemens SIMATIC OP27.

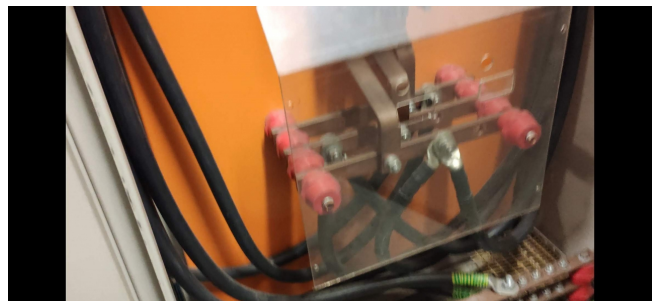
- 1x Sabroe TSMC 116L with AEG 110kw E-motor
- 1x Sabroe TSMC 116S with Schorch 90kw E-motor
- Including lowpressure & highpressure oil seperators for systems
- Including 850Liter Economiser

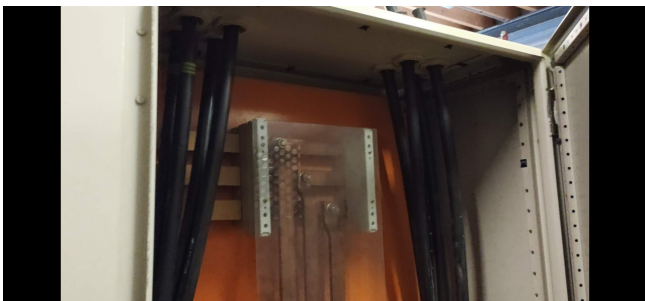
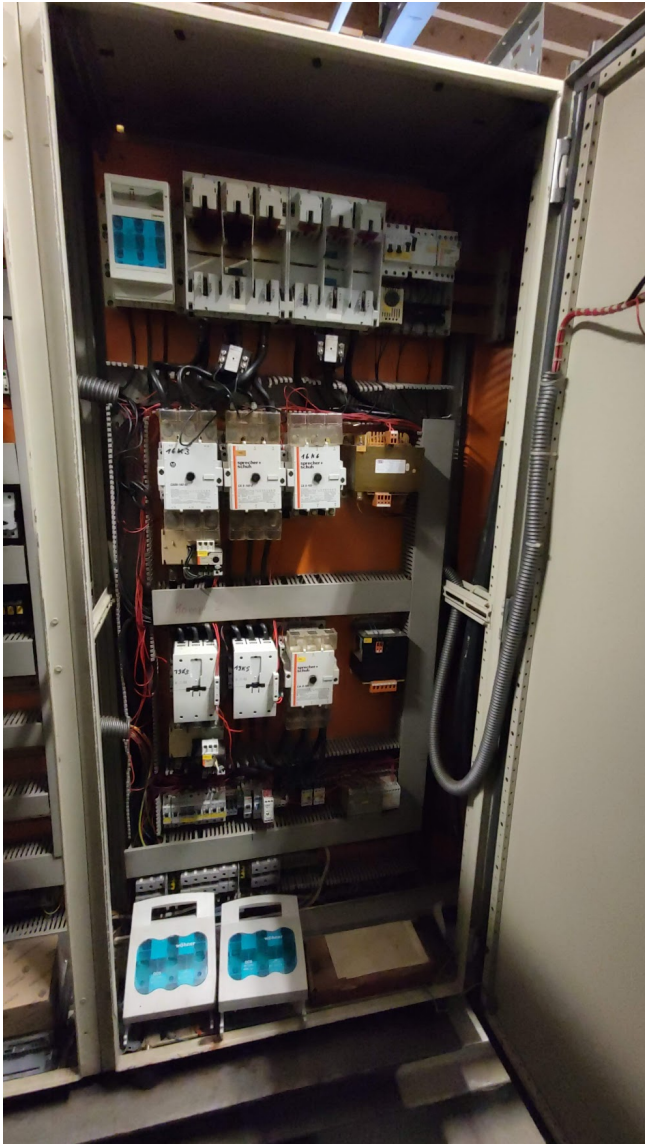
*** This packages is de-installed in operational condition, and will be cleaned / inspected before shipment.





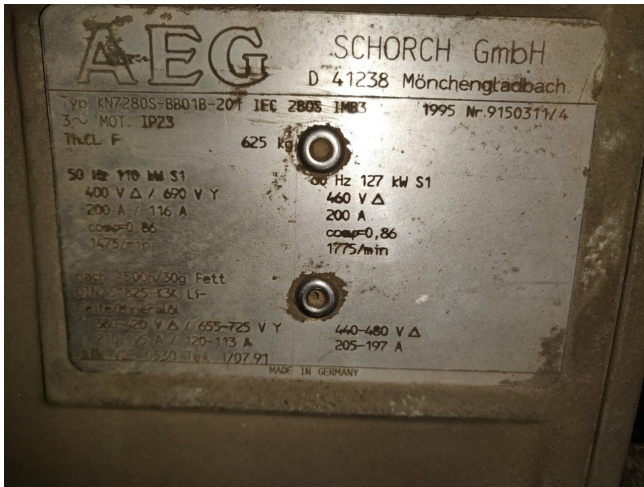












Model	Number of cylinders	Swept volume at 1500 rpm m³/h	Swept volume at 1800 rpm m³/h	R717 *						Unit dimensions in mm			Weight excluding motor kg	Sound pressure level at 1500 rpm dB(A)	Sound pressure level at 1800 rpm dB(A)
				Nominal capacities in kW at 1500 rpm		Nominal capacities in kW at 1800 rpm		L	W	H					
				Single/high-stage	Booster	Single/high-stage	Booster								
SMC 104 S	4	226	271	127	195	35	153	235	42	2261-2865	1213	1229	1195	79	82
SMC 104 L	4	283	339	165	250	47	188	300	57	2261-2865	1213	1229	1215	80	83
SMC 104 E	4	339	N/A	203	306	58	N/A	N/A	N/A	2261-2865	1213	1225	1220	80	83
SMC 106 S	6	339	407	191	293	53	229	352	64	2286-2890	1267	1247	1380	81	83
SMC 106 L	6	424	509	247	375	71	297	450	85	2286-2890	1267	1247	1400	82	84
SMC 106 E	6	509	N/A	304	459	87	N/A	N/A	N/A	2286-2890	1267	1247	1400	82	84
SMC 108 S	8	462	543	295	391	71	306	469	85	2311-2915	1361	1247	1595	82	84
SMC 108 L	8	566	679	330	500	94	396	600	113	2311-2915	1361	1247	1630	83	85
SMC 108 E	8	679	N/A	406	612	116	N/A	N/A	N/A	2311-2915	1361	1247	1650	83	85
SMC 112 S	12	679	814	382	586	106	459	703	127	3279-3887	1475	1448	2055	83	85
SMC 112 L	12	848	1018	495	750	141	593	900	169	3279-3887	1475	1448	2280	83	86
SMC 112 E	12	1018	N/A	609	918	173	N/A	N/A	N/A	3279-3887	1475	1448	2300	83	86
SMC 118 S	16	905	1086	520	782	141	611	938	170	3329-3737	1536	1445	2505	84	86
SMC 118 L	16	1131	1357	659	1000	188	791	1200	228	3329-3737	1536	1445	2535	84	87
SMC 118 E	16	1357	N/A	822	1224	231	N/A	N/A	N/A	3329-3737	1536	1445	2590	84	87